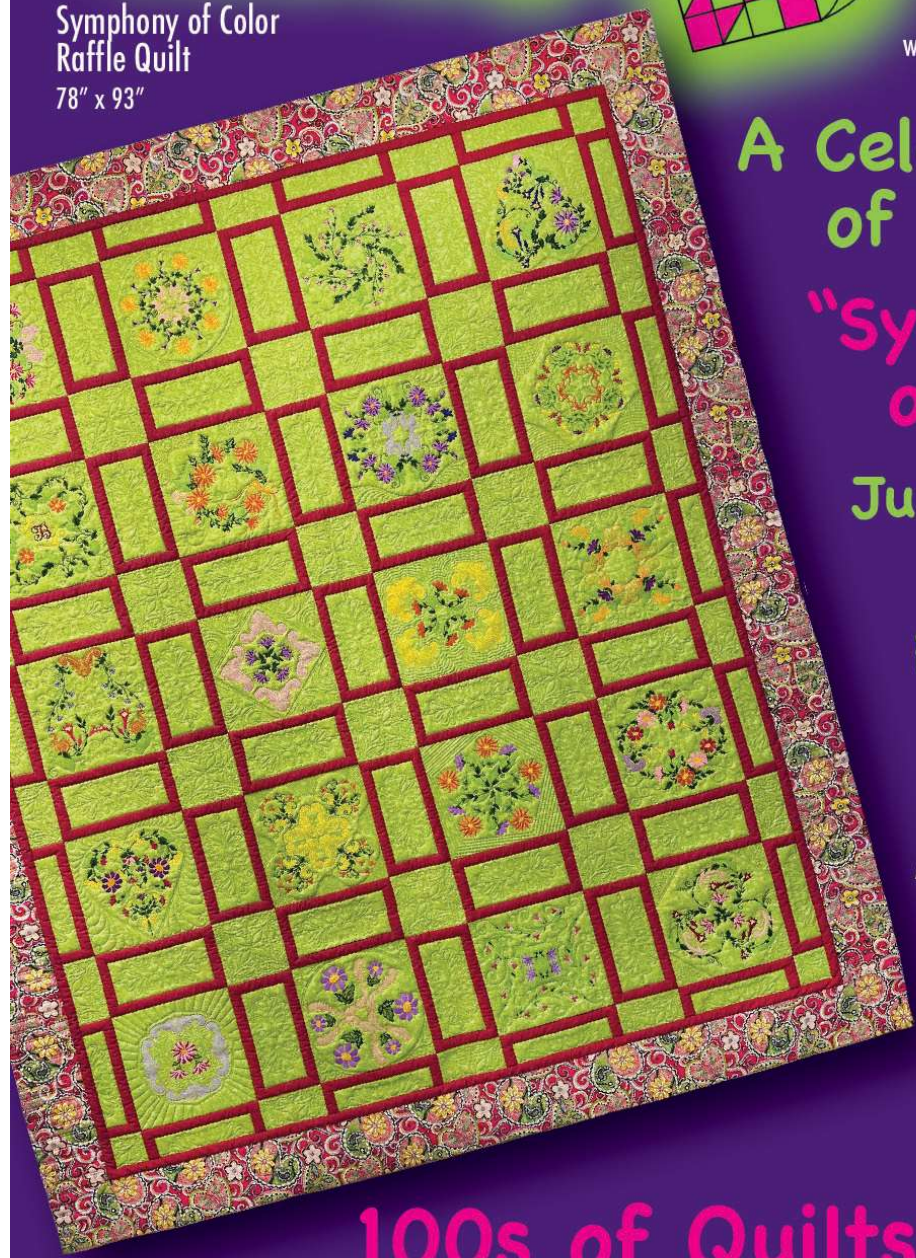




Central Oklahoma
Quilters Guild

www.centralokquilters.org

Symphony of Color
Raffle Quilt
78" x 93"



A Celebration
of Quilts

"Symphony
of Color"

July 18-19,
2025

Friday &
Saturday
9AM-5PM

Admission: \$12 Each Day
Lots of FREE Parking

Oklahoma State
Fairgrounds

Centennial Building

609 Kiamichi Place
OKC, OK 73107

100s of Quilts

Lots of Vendors • Recycled Treasures • Various Raffle Baskets!
Tickets \$1 or 6/\$5 • Raffle Drawing for all items at 4PM Saturday afternoon
Need not be present to win.



The Quilt Show Committee is pleased to provide this information for the 2025 COQG Celebration of Quilts! Please read everything carefully, as there are important changes in the process and procedures this year.

The 2025 Central Oklahoma Quilt Guild is pleased to offer the following ways to enter your quilt:

- Masters Division (Judged)
- Artisan Division (Judged)
- Youth Division
- Display Only
- Quilt for Sale
- President's Challenge

Except for the Youth Division, all entrants must be COQG Members in Good Standing and may enter up to five (5) quilts for judging in this year's show.

What is a Member in Good Standing?

A member in good standing lives in the State of Oklahoma, has an active membership, and has done at least ONE of the following:

- ❖ Attended 4 meetings per year. **OR**
- ❖ Attended 2 workshops per year. **OR**
- ❖ Served on the COQG Board. **OR**
- ❖ Served on the COQG Quilt Show Committee. **OR**
- ❖ Participated with Heart Warmers by donating at least two crib-sized (or larger) finished quilts for our children's charities. **OR**
- ❖ Volunteered the 2023 COQG Quilt Show for at least four (4) hours.

Special consideration will be given to NEW COQG members or may be considered individually.

2025 Quilt Show Entry Information

Number of Entries:

Each COQG member may enter up to five (5) items. Display-only entries do not count toward the five-item limit.

Quilt Entry:

At our website, www.CentralOKQuilters.org/quilt-show, complete the entry form AND UPLOAD A DIGITAL PHOTO for each quilt entered. ALL ENTRIES ARE TO BE MADE AT THE WEBSITE. If you need assistance with entering your quilts, please contact Annette Bean, (405-831-0361), or Jeanne Bugg, (405-226-7341).

Each quilt entry and photo must include the quilt name, maker's name, and member number. We will take digital images of your quilts if you need assistance at the March and April meetings.

Entry Deadline:

The entry **deadline is Thursday, April 24, 2025**, and the quilt top must be completed by this time. We ask that the quilt top be finished, which increases the likelihood that the entire quilt will be completed in time for the show two months later. Conversely, if you know before the show that the quilt will NOT be finished, we ask that you notify the Quilt Show Committee so that the display plans may be adjusted accordingly.

The Quilt Show Committee must be notified that the quilt is being withdrawn on or before July 1, 2025. The committee will not be upset if you must withdraw, but the Display Chairpersons need to be able to plan in advance.

Quilt Story:

Your quilt story must be included on the entry form. Your submitted story should be no longer than 150 words. Assistance with completing the story will be available at the Guild meetings. The committee reserves the right to edit, as needed, for space.

Category Placement:

Please select the category you feel best fits your entry. The Quilt Show Committee may need to move quilts into other categories to make the competition fair. If this occurs, you will be notified in advance so that you can approve of the alternate category placement.

Display Only:

Entry forms are required for the non-judged quilts. For these entries, check the "For Display Only" box on the entry form. These quilts are hung only if space allows. The entry form ensures the quilt is returned to the correct individual.

Entry Agreement:

The signature box must be electronically checked or signed.

2025 QUILT SHOW ENTRY INFORMATION CONTINUED

Quilt Sleeve:

ALL QUILTS must have a 4” deep finished sleeve. The circumference of the “sleeve tube” should be 8” and attached to the back of the quilt. The top of the sleeve should be no higher than 95” from the bottom to ensure that the quilt will not drag on the floor when hung.

This sleeve should be attached to provide plenty of “play”. If the hanging sleeve is too narrow, it will not slip easily over the crossbar, in which case the Display Committee reserves the right to not hang the quilt.

Quilt Label:

All quilts must have a fabric identification label sewn to the back of the quilt giving at least the member’s name and the name of the quilt. The label ensures that the quilt is returned to the correct individual.

Awards:

First-, Second-, and Third-place ribbons will be awarded in each category. The First place in each category will be eligible for Best of Show. Invitational and “For Display Only” quilts are not judged. Winning entries will be awarded a ribbon.

Quilt Drop-Off:

Quilts are to be delivered between **July 7-11** to a member of the Receiving Committee. Names and addresses of the receiving committee will be listed in the May and June newsletters.

Each entry must be in a cloth bag (no plastic) with your name on both sides of the bag in large, readable block letters. The cloth bag must be 1½ times larger than your folded quilt for ease of handling. Please do not tie the bag closed.

Quilt Pick-Up:

When you drop off your entry items, you will be given a “Permission to pick up entry form” as a receipt for each item you entered. No entry will be released without this form. No quilts will be released until the end of the show.

Quilts will be available for pick-up AFTER 5:30 pm on the last day of the show.

Security:

After-hours security personnel will be on duty.

Insurance:

Members are responsible for insuring entry items as desired.

JUDGED CATEGORIES:

These categories will be duplicated for the Master and Artisan divisions. Masters will only compete with Masters, and Artisans will only compete with Artisans. Please be advised that categories will be adjusted for the number of entries and for “Professionally quilted” and for “All work done by the entrant.” This will be at the sole discretion of the Quilt Show Display Committee. Please read these descriptions carefully. When filling out your form, select everything that applies to your quilt.

LARGE PIECED QUILT: This category is for any quilt larger than 240” on the perimeter and is primarily pieced.

LARGE APPLIQUE QUILT: This category is for any quilt larger than 240” on the perimeter and is primarily appliqued.

LARGE MIXED TECHNIQUE QUILT: This category is for any quilt larger than 240” on the perimeter and is not defined as pieced or appliqued or is a combination of several techniques.

SMALL PIECED QUILT: These quilts are suitable for display on a wall, table, or as a throw quilt rather than a bed quilt. The perimeter measures 239” or less but has at least one side larger than 30”.

SMALL APPLIQUE QUILT: These quilts are suitable for display on a wall, table, or as a throw quilt rather than a bed quilt. The perimeter measures 239” or less but has at least one side larger than 30” and is primarily appliqued.

SMALL MIXED-TECHNIQUE QUILT: This category is for any quilt smaller than 239” on the perimeter and is not defined as pieced or appliqued or is a combination of several techniques.

HAND-QUILTED QUILT: This category is for any quilt hand-quilted by the entrant.

FOUNDATION PAPER-PIECING QUILT: This category is for any quilt that is pieced using a foundation piecing technique.

ARTISAN DIVISION ONLY:

FIRST-TIME ENTRY: Entries must be the first quilted project entered into ANY judged quilt show. The quilt top must be constructed entirely by the entrant, but it may be professionally quilted.

ARTISAN AND MASTER QUILTERS COMBINED DIVISION:

MINIATURE QUILT: Quilts in this category must reflect a reduced scale of the piecework, applique, embroidery, or whole cloth. The maximum size of one side of the quilt is 24” with a maximum block size of 4” square.

JUDGED CATEGORIES CONTINUED

MODERN QUILT: According to the Modern Quilt Guild, these quilts use bold colors and prints, high-contrast and graphic areas of solid color, improvisational piecing, minimalism, expansive negative space, and alternate grid work. “Modern traditionalism” or updating of classic quilt designs is often seen in modern quilting.

KITS/PANELS/PRE-CUTS: Any quilt made from a kit, using a printed panel, or pre-cut fabrics.

ART QUILT: All piecing, quilting, and embellishments are done by the maker, and it is an original design. Any technique, materials, or combination may be used in a non-traditional way. At least one side is larger than 30”. A TRADITIONAL QUILT SLEEVE MUST BE USED FOR HANGING.

PICTORIAL QUILT: The quilt illustrates a recognizable image, such as a portrait, landscape, wildlife, etc. The top must be constructed by a single entrant. The quilt may be professionally quilted. At least one side is larger than 30”.

DIGITALLY PRODUCED: This quilt is made with embroidered or appliqued blocks produced from a pre-programmed, digitized design on an embroidery machine. It may be professionally quilted. At least one side is larger than 30”.

WHOLE-CLOTH QUILT: A whole-cloth quilt is created by using a solid piece of fabric as the top, instead of being pieced. At least one side is larger than 30”.

HOLIDAY/NOVELTY QUILT: This quilt will have a holiday or novelty print theme. No size restrictions.

GROUP QUILT: The quilt top is made by two or more people, and it may be professionally quilted. At least one side is larger than 30”.

ENGLISH PAPER-PIECING QUILT: This quilt is made by wrapping fabric around shapes made of heavier paper and hand-sewing the shapes together into a quilt. At least one side is larger than 30”.

MISCELLANEOUS: This category is for purses, bags, apparel, pillows, etc., where quilting was used in its construction.

YOUTH DIVISION: This division is for 18-year-olds and below who are not Junior members but are sponsored by a current member. These entries will not be judged but will be given participation ribbons and the opportunity to show off what they have learned in the craft. Their story must include the names of anyone who may have helped with their project. A member may sponsor up to four (4) youth entries.

DISPLAY ONLY: (A box to check). These quilts are provided to the Quilt Show for exhibition purposes only and will not be professionally judged.

QUILT AVAILABLE FOR SALE: (A box to check) A price is to be posted on the quilt or item. All sales are finalized through the COQG Treasurer. COQG will keep 10% of the sale price.

PRESIDENT’S CHALLENGE: (Display only, unless you choose to enter it into another category to be judged.)

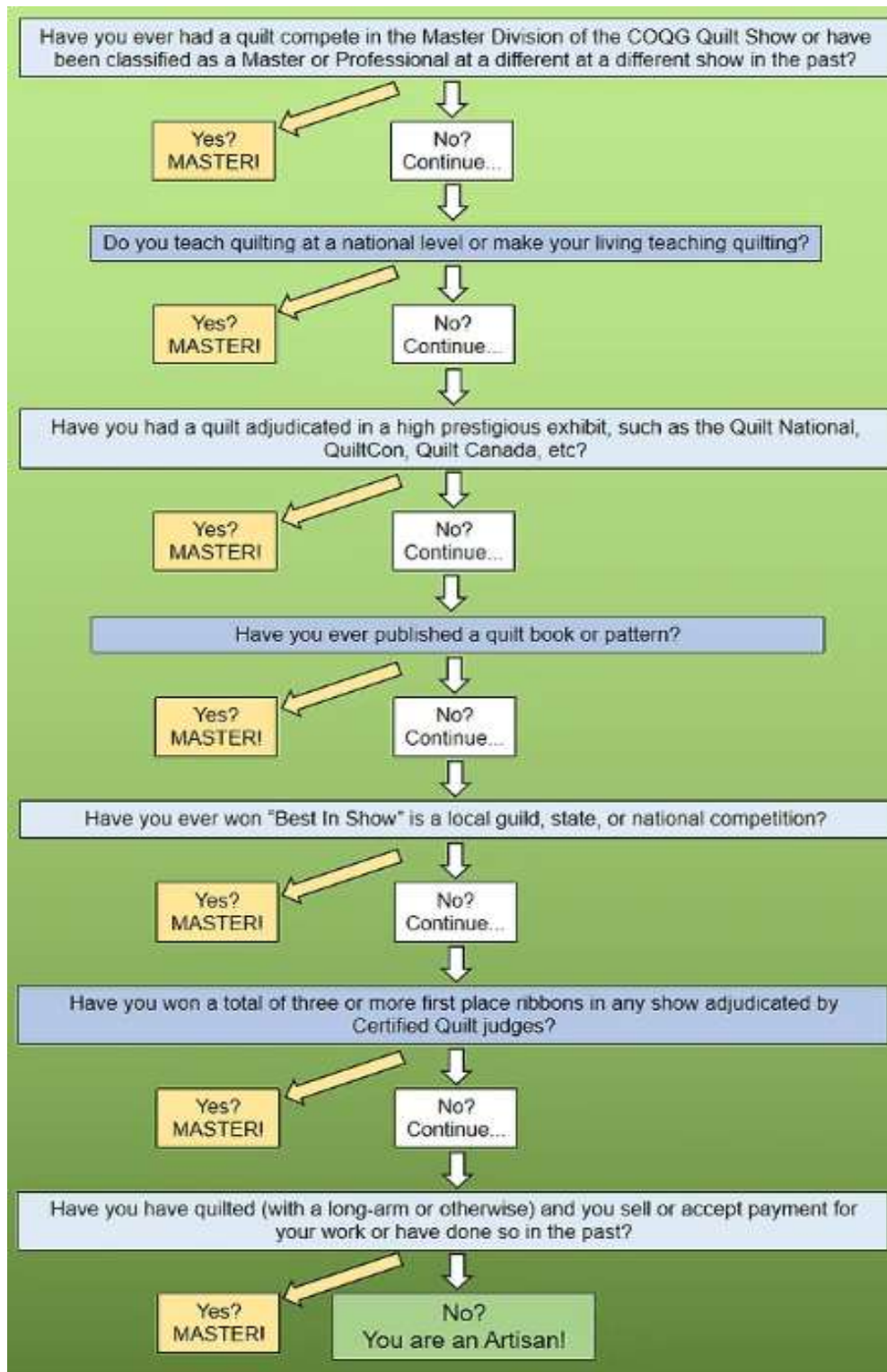
2023-24 year – “Black & White with a Pop of Color” (Carmen Burger)
2024-25 year – “One Block” (Andi Anderson)

DIVISION: Are you a "Master" or an "Artisan"?

Use this flow chart to determine if your quilts should be placed in the Master or the Artisan division.

The division definitions apply to the MAKER OF THE TOP, not if you had the quilt professionally quilted. That delineation comes in the category descriptions.

If you have EVER done anything that the flow chart indicates you are a Master, please consider yourself a "Master for Life" and take heart in knowing that your mastery and skill have been recognized.



Central OK Quilters Guild
PO Box 32546
Oklahoma City OK 73123